

MARSH PORTAL

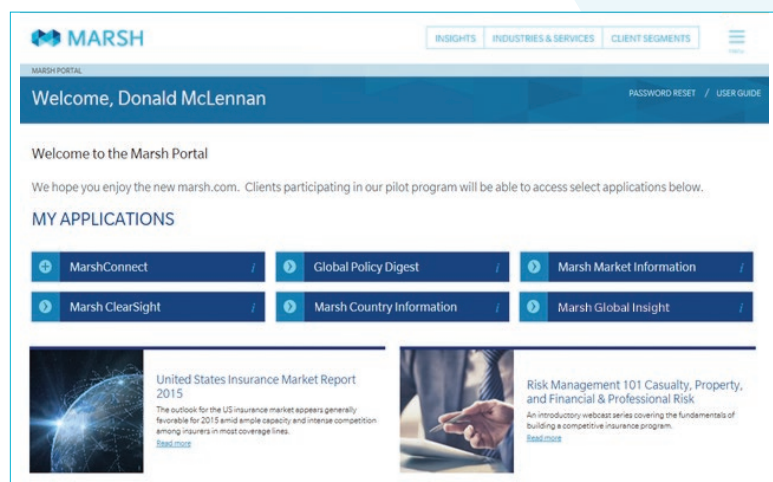


MARSH PORTAL

SIMPLIFYING ACCESS TO RISK TOOLS AND INSIGHTS

THE CHALLENGE:

- Do you need to quickly produce insurance market and policy information?
- Are you current with emerging risks, new solutions, and changing market conditions?
- Do you increasingly access information on digital platforms?
- Do you have trouble remembering passwords and finding online tools?



ONE SITE
ONE PASSWORD
MANY APPS

THE SOLUTION:

MARSH PORTAL

The Marsh Portal on the newly designed marsh.com makes it easy for you to use one site and password to access your applications, account information, industry-leading solutions, and data and analytics. With enhanced navigation and a fresh design, the Marsh Portal provides clients easy access to the information and solutions that will enable you to make critical risk decisions with confidence.

WHO IT'S FOR

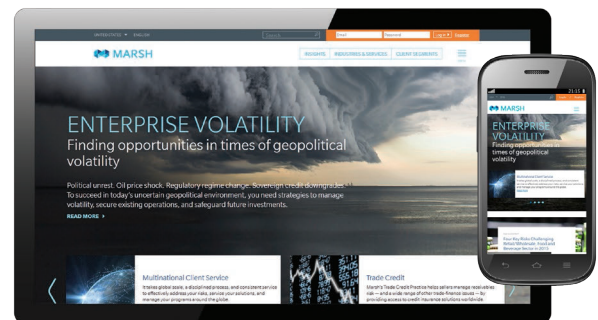
- Marsh insurance clients and risk managers
- Claims, safety, compliance and finance professionals



FEATURES

RISK INSIGHTS

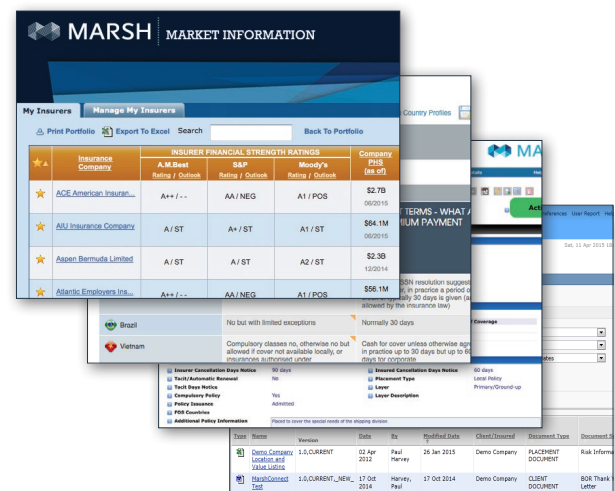
From Marsh's industry-focused experts around the world in a continually refreshed repository of insights, expertise, and best practices on mobile-friendly marsh.com.



SINGLE SIGN-ON

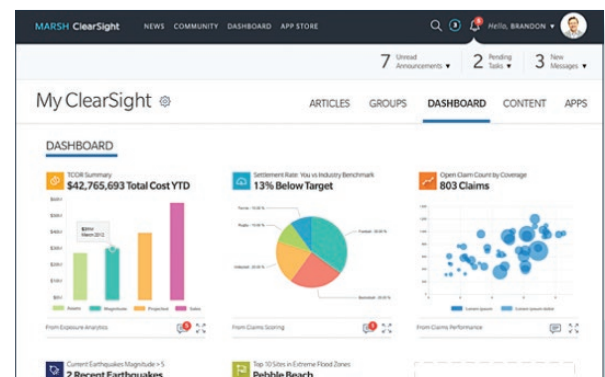
Easy, secure access via one set of credentials unlocks a wide range of Marsh tools from one site, including:

- *Marsh Market Information*: Global insurer and credit analysis.
- *Marsh Country Information*: Insurance market and regulatory topics from Axco Insurance Information Services.
- *Marsh Global Insight*: Frequently asked insurance regulatory and tax questions, local country intelligence, and network directory.
- *Global Policy Digest*: Policy documentation, summaries, and reports.
- *Documents*: Policies, endorsements, and invoices.
- *Certificate Requests*¹: Make online requests.
- *Memorandum of Insurance*¹: Alternate way to evidence cover.



MARSH CLEARSIGHT²

Single sign-on to one of the industry's leading risk, safety and claims platforms that brings together apps, analytics, and collaboration tools to help you optimize decisions across the risk life cycle.



¹ U.S. Clients only

² Subscription required for applications



For more information about the Marsh Portal, please contact your client executive or visit our website at <http://marsh.com/clientmarkettech>.

This document and any recommendations, analysis, or advice provided by Marsh (collectively, the “Marsh Analysis” are not intended to be taken as advice regarding any individual situation and should not be relied upon as such. The information contained herein is based on sources we believe reliable, but we make no representation or warranty as to its accuracy. Marsh shall have no obligation to update the Marsh Analysis and shall have no liability to you or any other party arising out of this publication or any matter contained herein. Any statements concerning actuarial, tax, accounting, or legal matters are based solely on our experience as insurance brokers and risk consultants and are not to be relied upon as actuarial, tax, accounting, or legal advice, for which you should consult your own professional advisors. Any modeling, analytics, or projections are subject to inherent uncertainty, and the Marsh Analysis could be materially affected if any underlying assumptions, conditions, information, or factors are inaccurate or incomplete or should change. Marsh makes no representation or warranty concerning the application of policy wording or the financial condition or solvency of insurers or reinsurers. Marsh makes no assurances regarding the availability, cost, or terms of insurance coverage. Although Marsh may provide advice and recommendations, all decisions regarding the amount, type or terms of coverage are the ultimate responsibility of the insurance purchaser, who must decide on the specific coverage that is appropriate to its particular circumstances and financial position.

Marsh is one of the Marsh & McLennan Companies, together with Guy Carpenter, Mercer, and Oliver Wyman.

Copyright © 2015 Marsh. All rights reserved. MA-15-13783